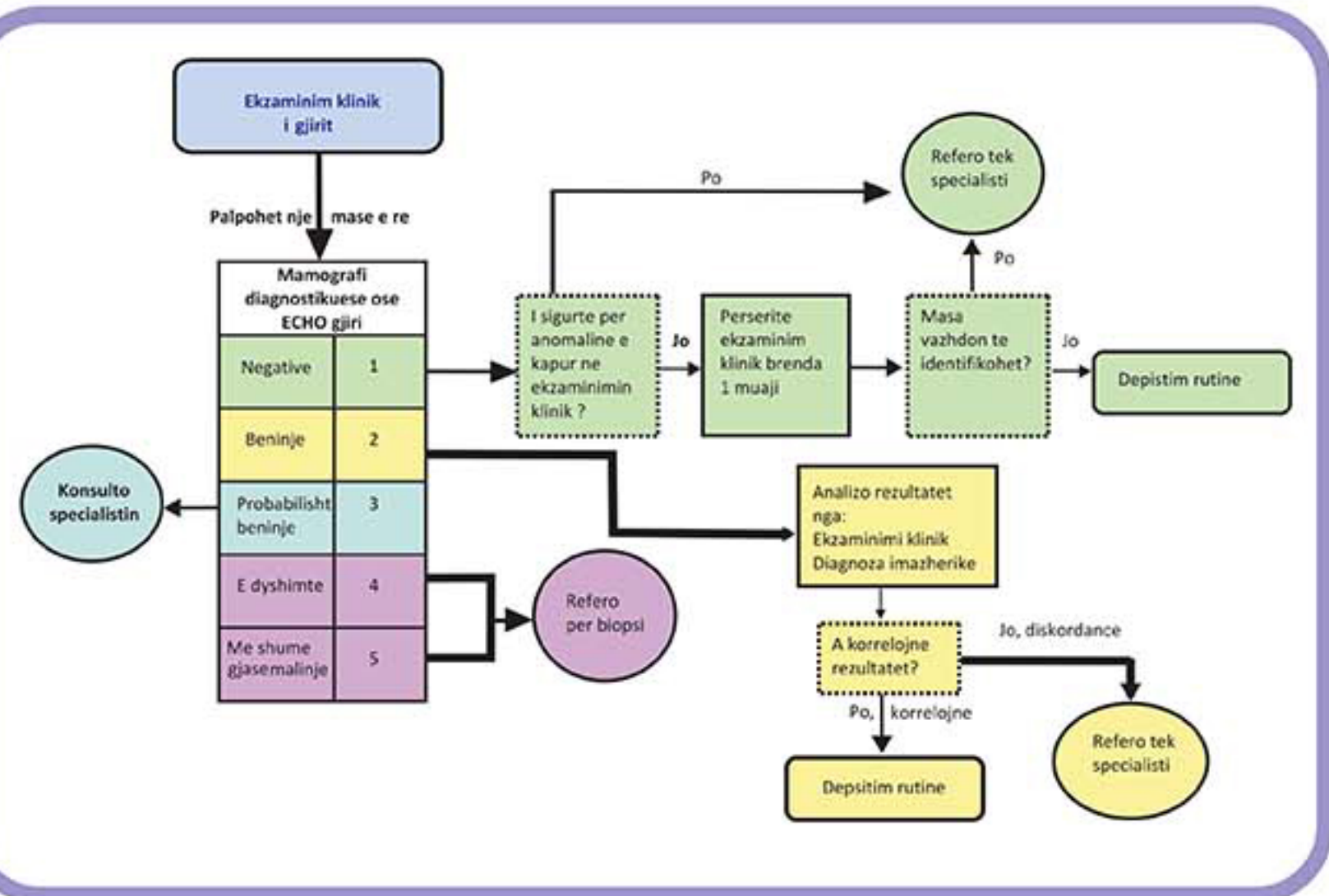


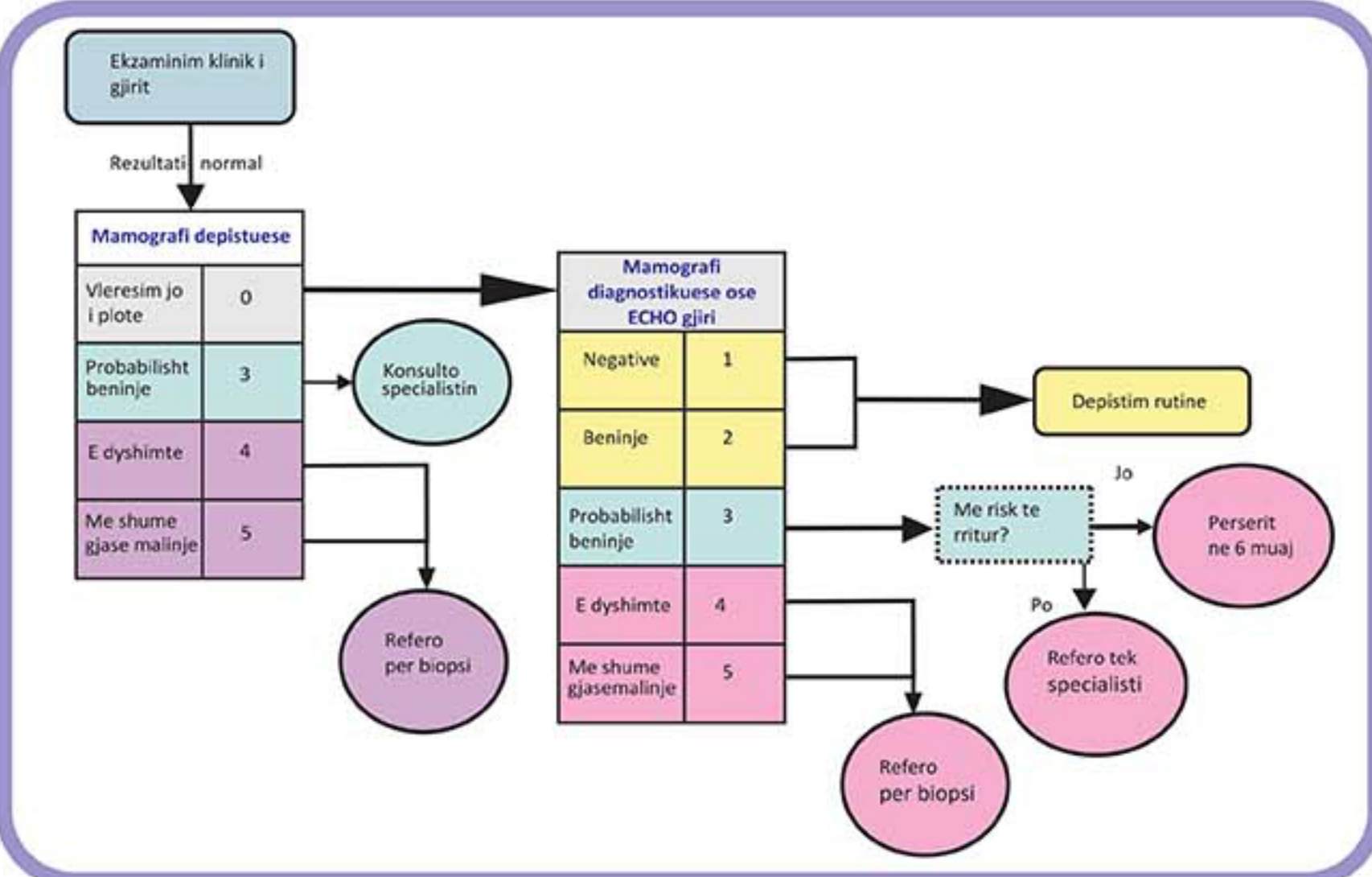
EKZAMINIMI KLINIK I GJIRIT NE KUJDESIN PARESOR



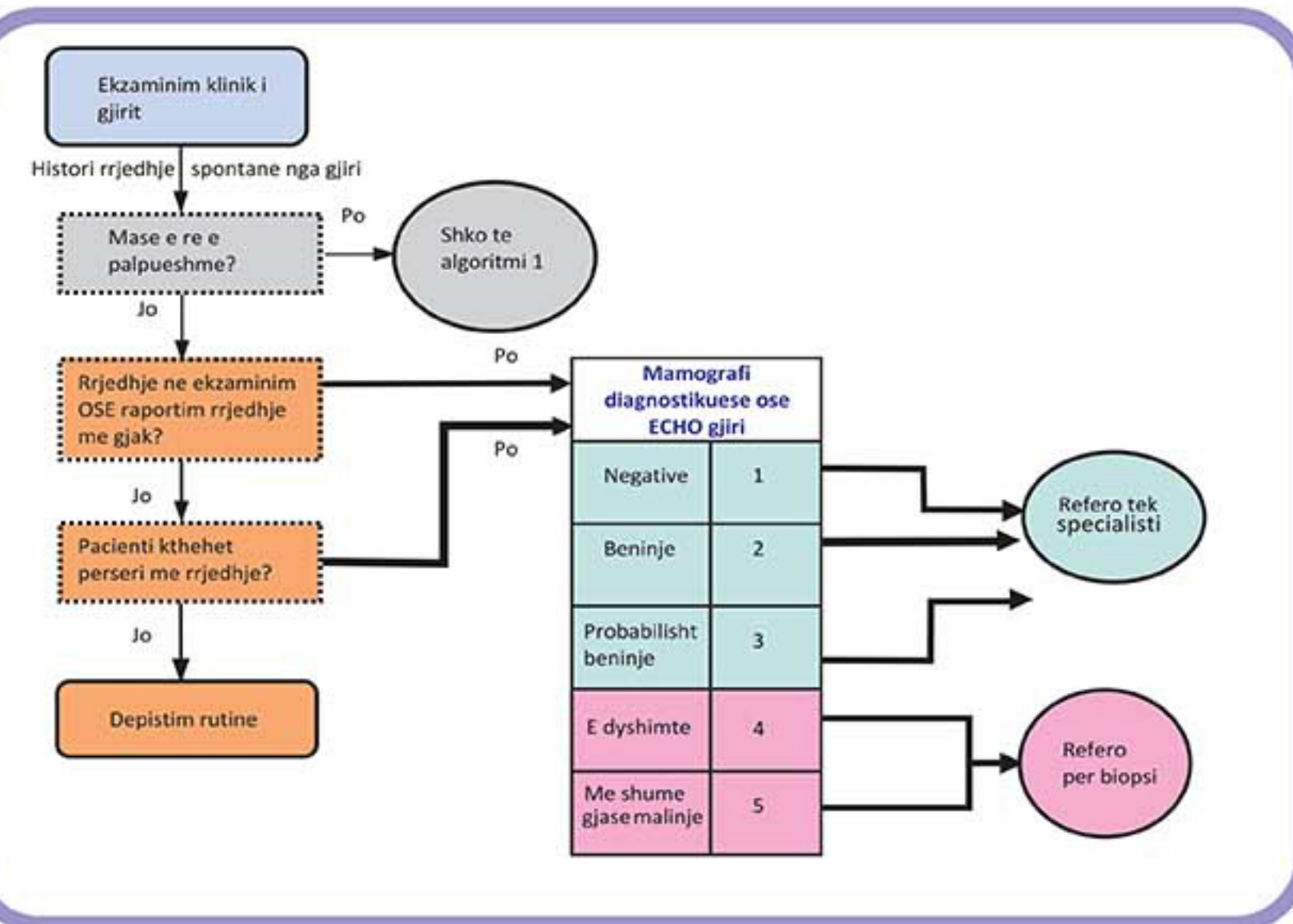
Algoritmi 1 Mase e re e kapur ne ekzaminimin klinik te gjirit



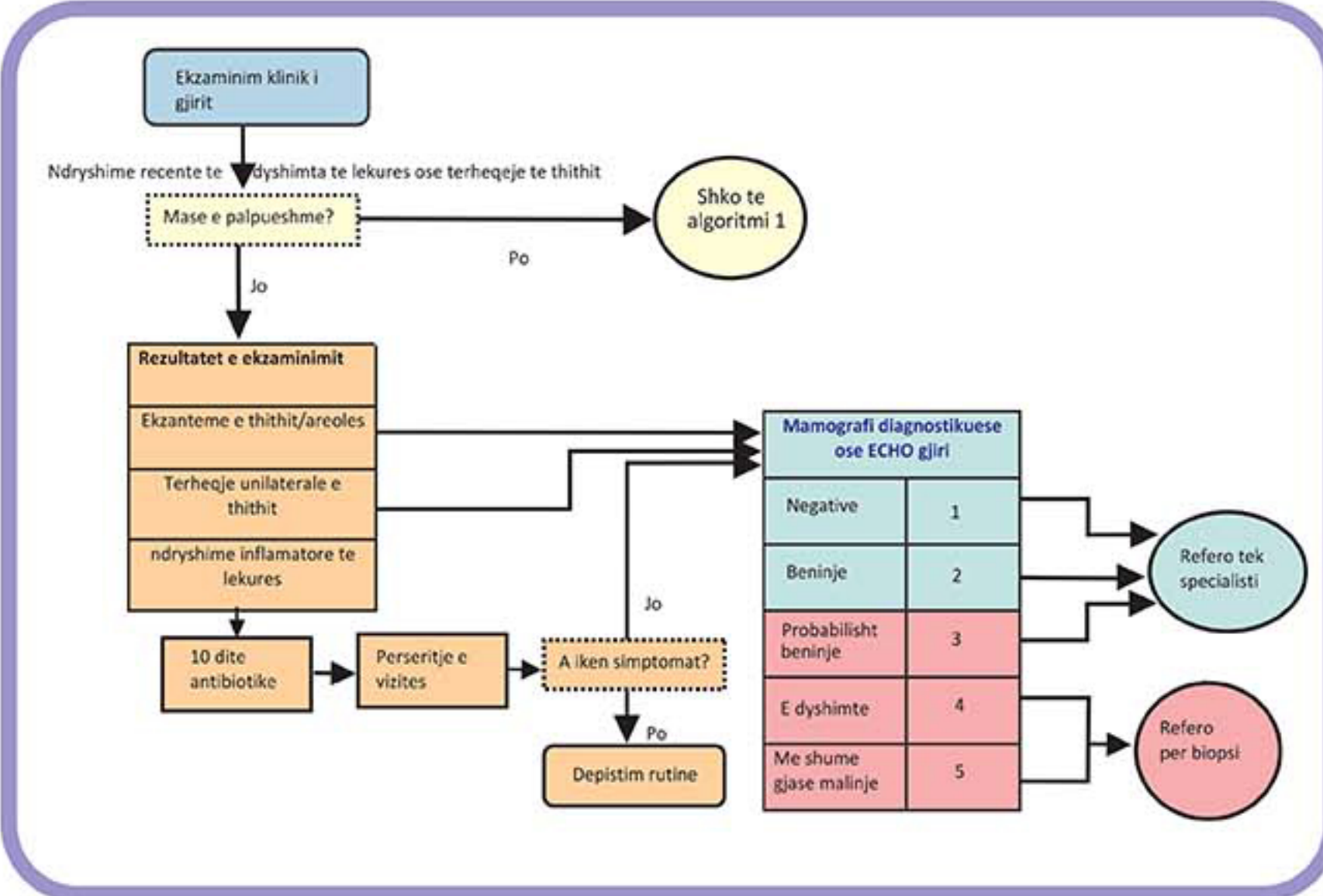
Algoritmi 2 Ekzaminim klinik i gjirit normal me mamografi anormale gjate depistimit



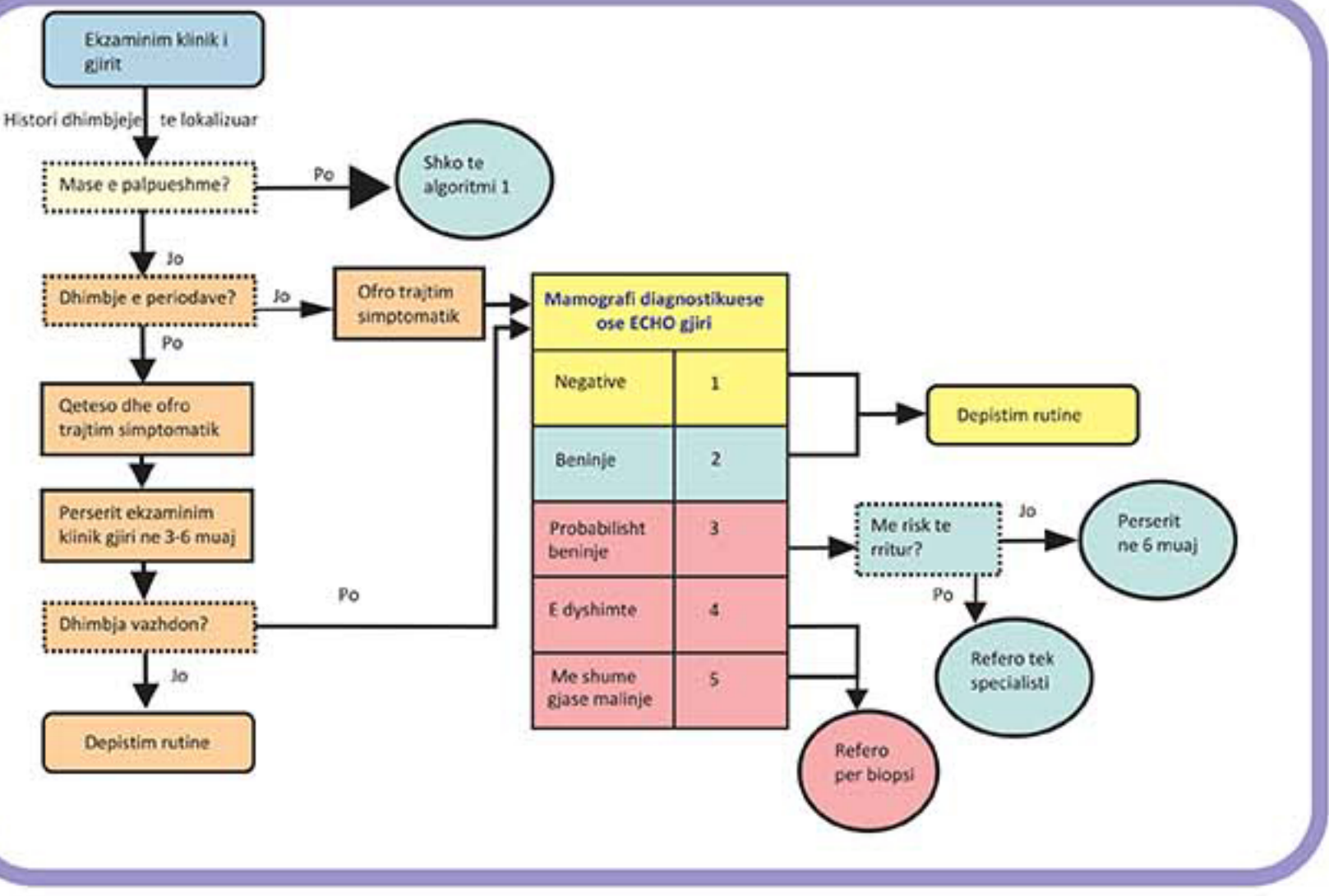
Algoritmi 3 Rrjedhje spontane unilaterale nga gjiri (tek grate qe nuk po ushqejne femijet me qumesht)



Algoritmi 4 Ndryshime ne lekuren e gjirit / terheqje e thithit



Algoritmi 5 Dhimbje gjoksi ne nje grua qe nuk po ushqen me qumesht



Algoritmi 6 Biopsia e gjirit

